



# Syngeneic Tumor Models

Accelerate Your Preclinical Immuno-oncology Research

Syngeneic tumor models are allografts derived from immortalized mouse cancer cell lines which are relevant for immunotherapy and immuno-oncology studies due to their intact immune systems. BioDuro offers a range of syngeneic models for preclinical studies of chemotherapeutic, small molecule and immunotherapeutic treatments.

Syngeneic Models: Surrogate Antibodies and MOA Studies

## Cancer Type

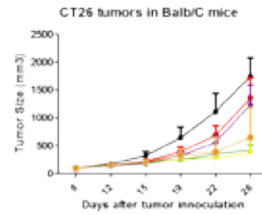
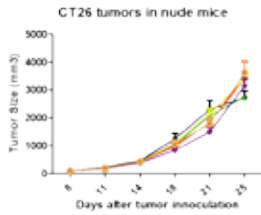
Melanoma  
Liver Cancer  
Lung Cancer  
Breast Cancer  
Colon Cancer  
Fibroblast  
B Cell Myeloma  
Insulin Tumor Cell  
Leukemia

## Cell Line

**B16-F10**  
**H22**, Hepa1-6  
**LLC**  
**4T1**  
**CT26, MC38**  
L-cells, L-Wnt3A  
SP2/MiL6  
InS-1(rat)  
C1498

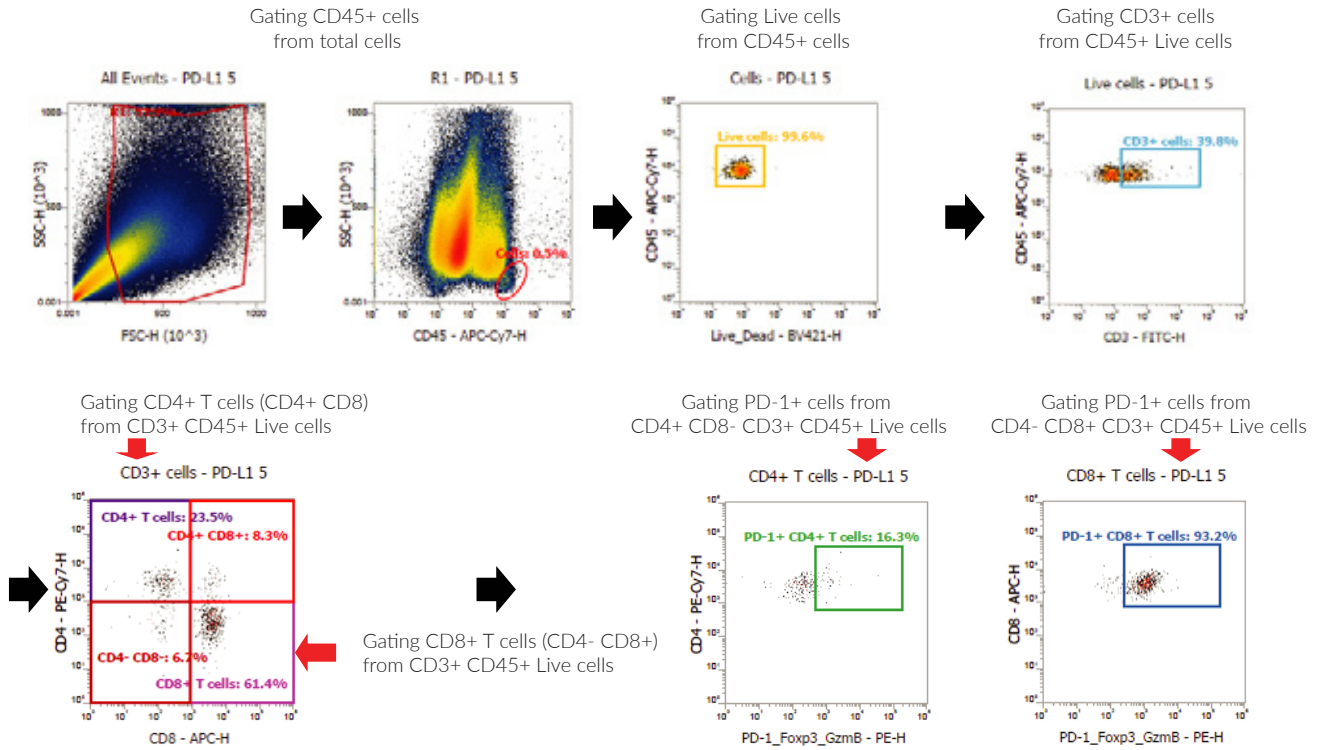
**\*Validated models**



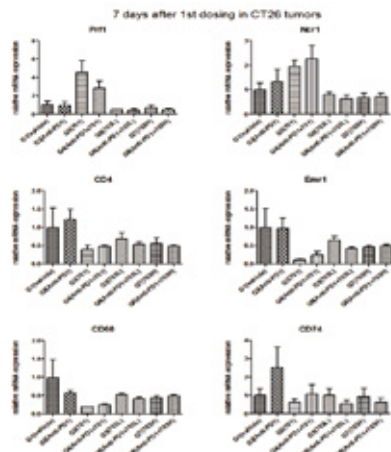


- Tumor growth inhibition curve
- Peripheral blood and tumor infiltrated lymphocytes phenotype analysis
- Serum multiplex cytokine analysis
- Histology staining
- Biomarker analysis by IHC and RT-PCR

FACS Analysis of Tumor Samples



Immuno-phenotype Analysis of Blood and Tumor Samples



Population analysis of blood and tumor samples by FACS or RT-PCR: CD4, CD8, NK, Treg, MDSC, Macrophage, DC

